



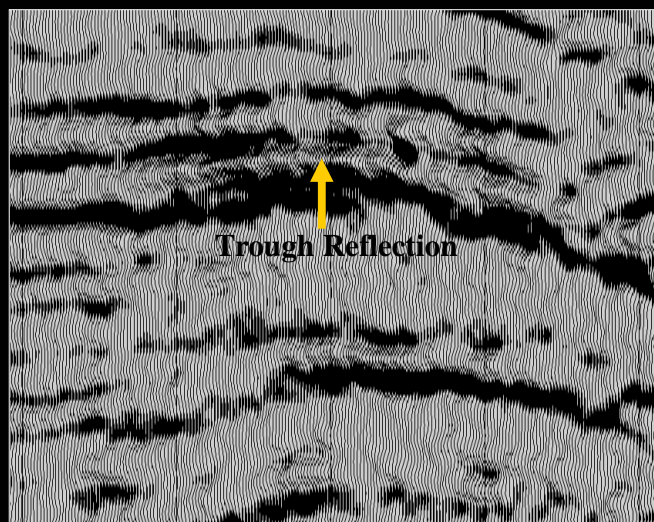
*The Future of E&P*

## ***INTRODUCING FluidPRO™ FLUID MODULUS INVERSION***

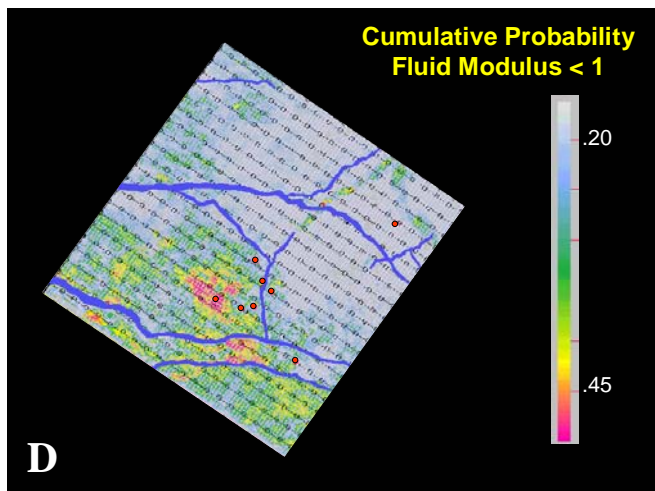
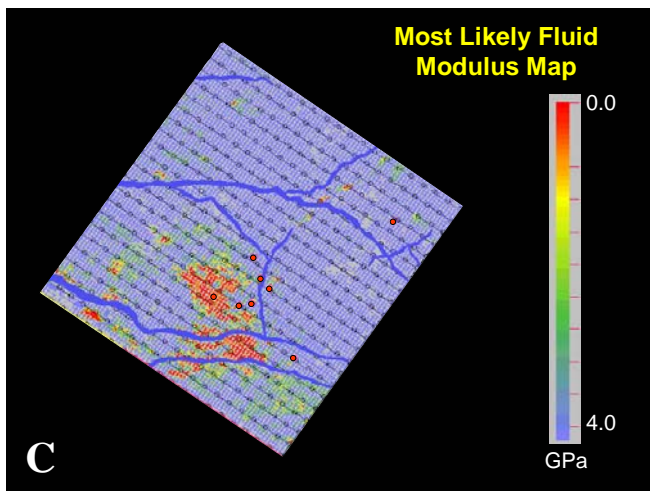
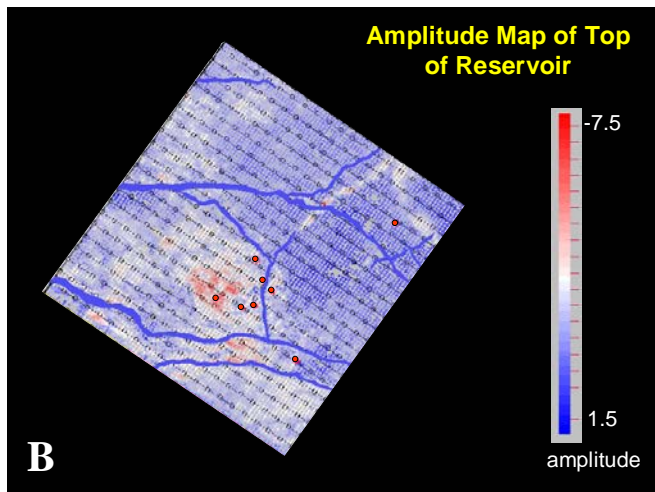
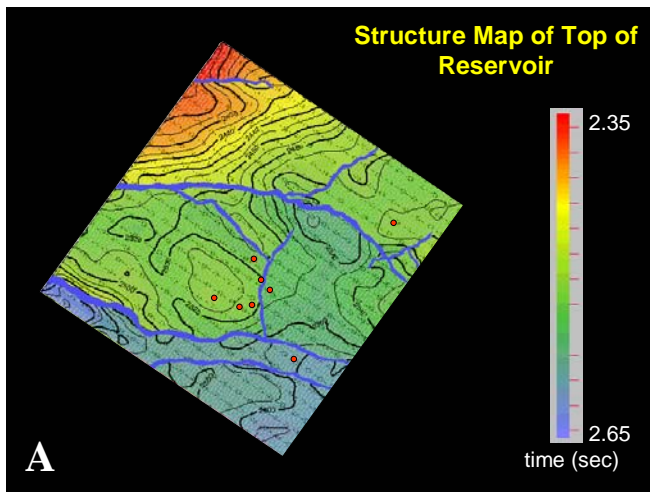
### ***Fluid Property Prediction To Solve Your Most Difficult Challenges***

**Fusion Petroleum Technologies Inc.** has developed a proprietary technique for performing fluid properties inversion. This process has been trademarked under the name **FluidPRO™**. Fusion offers this technique as a service to our clients who are interested in understanding the variations in fluid properties in their reservoir as a means to better predict reservoir performance and to plan for field development. **FluidPRO™** requires two primary inputs including (1) seismic attributes extracted on the horizon or interval of interest and (2) rock physics calibration from wells in the area. The details of these data requirements are available upon request from Fusion. The **FluidPRO™** process provides several outputs including (1) maps of the estimated fluid properties for a given horizon or interval, (2) a map of the cumulative probability distribution function for that horizon or interval, (3) quality control maps for each estimated fluid property map, (4) digital data for each of the products above, and (5) a final report with analysis and interpretation. For additional details on data requirements, pricing and deliverables, please contact Fusion and we will be happy to provide a detailed seminar on this exciting new product.

### **Seismic Section Showing Gas Reservoir Bright Spot**



*Example of a conventional amplitude anomaly for a hydrocarbon bearing sand reservoir.*



*FluidPRO™ inversion example showing the structure map (A) and amplitude map (B) for the horizon of interest from the previous figure, along with the most likely fluid modulus (C) and cumulative probability fluid modulus (D) maps.*

**THE BEST MINDS**

**THE BEST TECHNOLOGIES**

**THE BEST PROCESSES**

**LINKED BY CONSISTENT COMMUNICATION**

5277 Manhattan Circle, Ste. 160  
 Boulder, CO 80303  
 303-661-0400 (phone)  
 303-661-0401 (fax)



8665 New Trails Drive, Suite 125  
 The Woodlands, TX 77381  
 281-363-8500 (phone)  
 281-363-4657 (fax)

[www.fusiongeo.com](http://www.fusiongeo.com)