

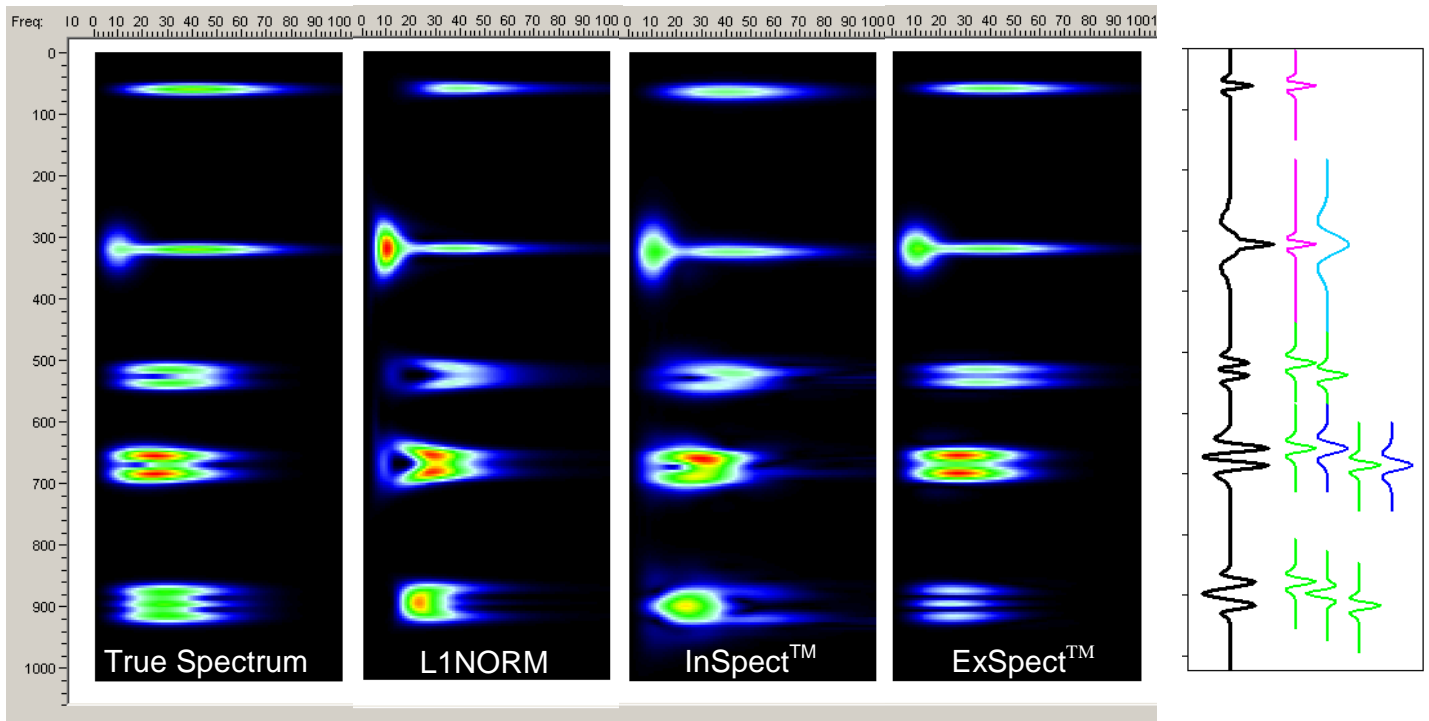


*The Future of E&P*

## **INTRODUCING *ExSpect™* SPECTRAL DECOMPOSITION**

*The Next Generation in High-Quality Spectral Resolution*

**Fusion Petroleum Technologies Inc.** has once again broken through the scientific barriers of spectral analysis with a revolutionary new spectral decomposition technique. **ExSpect™** delivers superior results compared to all existing commercial spectral decomposition methods including all previous wavelet transform methods and FFT, DFT and MEM methods. **ExSpect™** is now being offered exclusively by Fusion and can be used for direct detection of hydrocarbons, thin bed analysis and attenuation analysis.



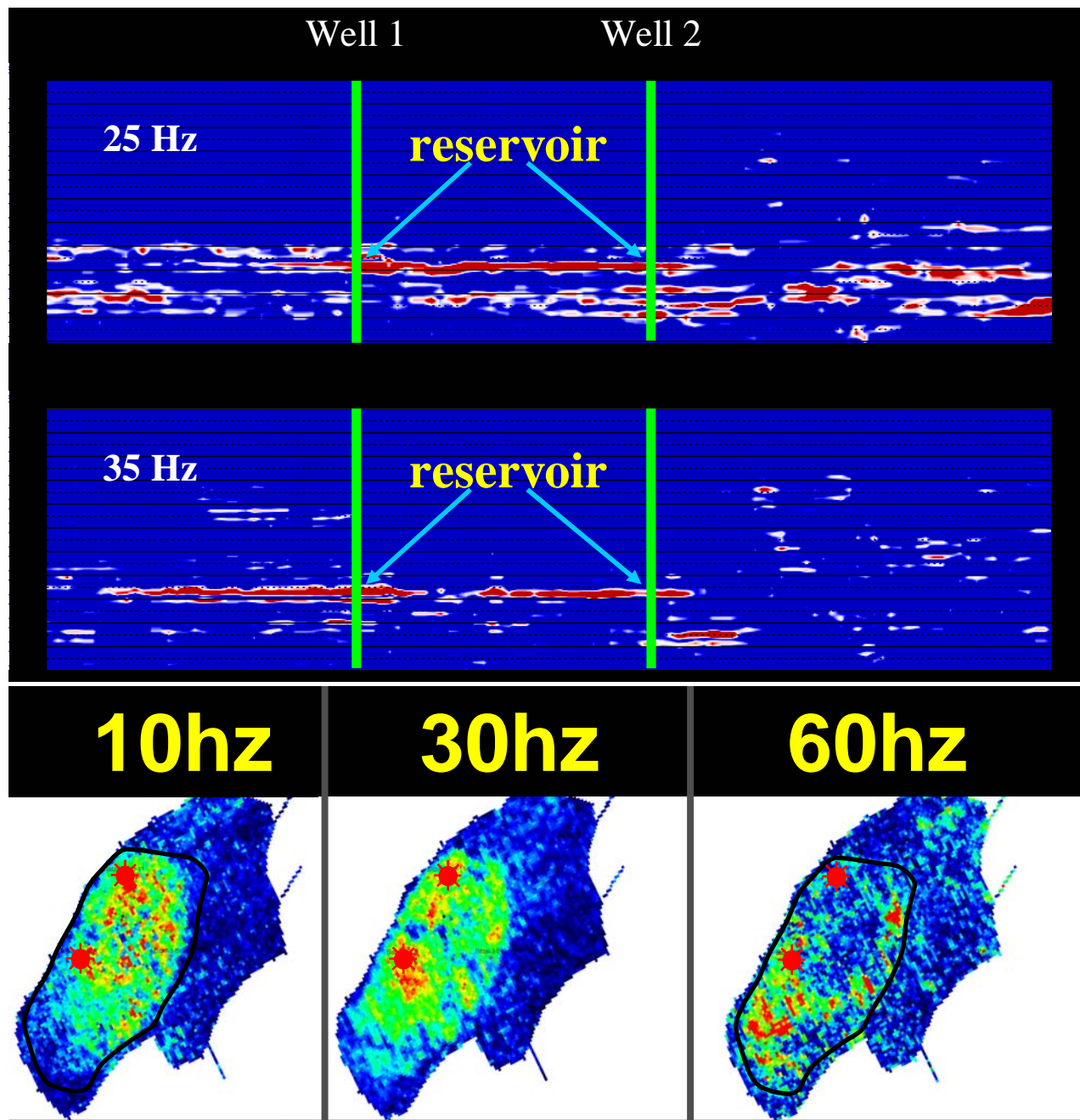
*A comparison of the **ExSpect™** process with the L1 Norm method and **InSpect™** for spectral decomposition. Note the greatly improved quality and fidelity of the **ExSpect™** time versus frequency display.*

**THE BEST MINDS**

**THE BEST TECHNOLOGIES**

**THE BEST PROCESSES**

**LINKED BY CONSISTENT COMMUNICATION**



*Seismic iso-frequency sections at 25 Hz and 35 Hz for the Bitzal field in Macuspana Basin, Mexico reveal baffles in a reservoir at 35 Hz that were not imaged at 25 Hz (upper panel). Map views at 10, 30 and 60 Hz reveal the channels responsible for the baffles at 30 Hz, and also reveal thinner reservoir to the south of the wells at 60 Hz.*

5277 Manhattan Circle, Suite 160  
 Boulder, CO 80303  
 303-661-0400 (phone)  
 303-661-0401 (fax)



8665 New Trails Drive, Suite 125  
 The Woodlands, TX 77381  
 281-363-8500 (phone)  
 281-363-4657 (fax)

[www.fusiongeo.com](http://www.fusiongeo.com)